

TransNet



Your Partners in Power

October 2017

LV JUICE

ANY TIME, ANY PLACE, ANY SITUATION



FREE TE POWER BANK

When you spend **\$500.00**
+GST on WCSM on one
invoice this month



Power bank colour may vary



WCSM

FEATURES

- Operating temperature range -40°C to 120°C
- Resistant to chemicals, corrosion & decay
- Shrink ratio 3:1
- Voltage class 1kV
- Sealant lined
- Halogen free
- Fluid resistant
- Fast cost-effective way to waterproof joints
- Use on LV underground jointing & terminations
- Excellent for sealing lugs & glands - seals over irregular shapes

Raychem's WCSM heat-shrinkable heavy-wall tubing features electrical & physical properties of a cable oversheath material in a rugged & easily installed form. WCSM has proven its long term reliability in harsh climatic conditions & polluted environments.

On heating, WCSM fits tightly over a wide range of cables & accessories because of its high shrink ratio, & its inner sealant wall gives a dependable moisture seal. WCSM's mechanical strength enables immediate back-filling of cable trenches after jointing.



Raychem
from TE Connectivity



This Month

FREE TRANSNET BOTTLE OPENER

WHILE STOCKS LAST

When you spend
over \$600 (excl
GST) on one
invoice this month



www.transnet.co.nz

TRANSNET UNIVERSAL
FLUSH BOX

PAGE 2

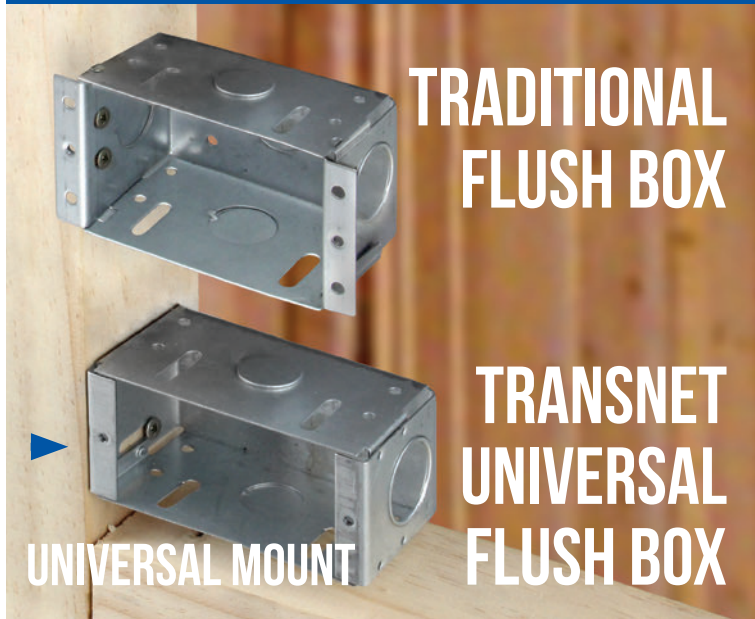
APATOR FUSE SWITCH
DISCONNECTS

PAGE 5

RAYFLATE DUCT SEALING
SYSTEM

PAGE 8

100% NEW ZEALAND OWNED

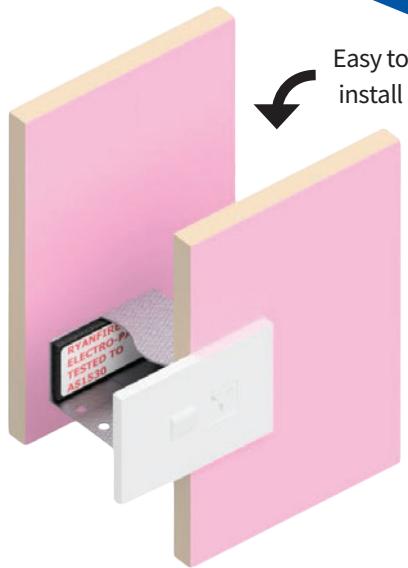


FLUSH BOX FEATURES

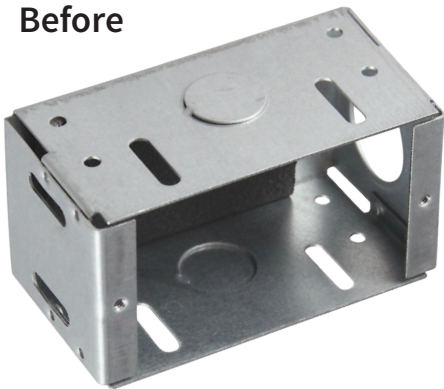
- Completely redesigned to make it truly "universal" in its mounting options
- Speed up fitout time as switchplate screws won't bind into the timber behind it
- Can be mounted vertically or horizontally anywhere on the framework of a wall

USE WITH

#TNFIREPAD



Before



After



In the case of heat or fire, the fire pad develops a high volume expansion (20.1) and a high expansion pressure which causes the complete closure of an opening within a short time in order to prevent the transition of smoke and fire.

FIRE PAD FEATURES

- Fire resistance class EL-90 according to EN 1366/3
- Tested to AS1530.4-2005 AS4072.1-2005

APPLICATIONS

Electrical flush boxes such as

- Light switches
- Socket outlets

Tested with single layer GIB walls.

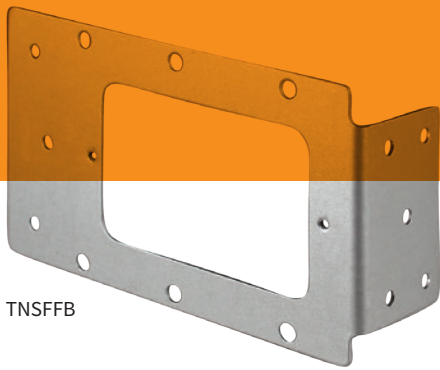




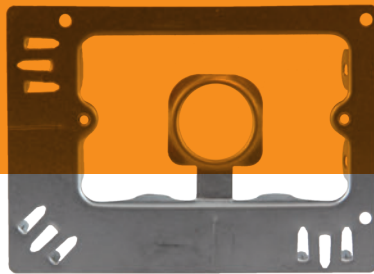
METALWARE C CLIP

The TNCCLIP is made from strong Zinc plated steel and designed to fit any plaster board up to 13mm. Suitable for mounting wall switches and PowerPoints either horizontal or vertically.

\$2.15 + GST EA.



TNSFFB



TNMFOPEN

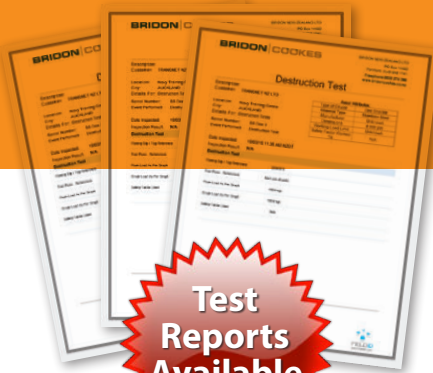
FLUSH BOXES

Our flush boxes have been developed and refined with the help and input of people in the industry to ensure user friendly products. In addition to these steel frame and open (Gib mounting plate) boxes, double & single boxes are also available.

TNSFFB \$5.38 + GST EA.

TNMFOPEN \$1.25 + GST EA.

Cat No.	Description	Pack Size
TNSFFB	STEEL FRAME FLUSH BOX	20
TNMFOPEN	GIB MOUNT FLUSH BOX	20



Test Reports Available

INDEPENDENTLY TESTED IN NZ



Each of our metalware products has been independently batch tested in New Zealand by skilled technicians to ensure that the highest quality standards are maintained. Our comprehensive metalware range is designed to perform successfully in our local environment. Robust, precise, and dependable, TransNet metalware works whenever and wherever you need it.

RANGE INCLUDES

Catenary wire • Wire strainer ratchets • Dogbones • Mounting hardware • Jack chain • Girder spring saddles • Full saddles • Half saddles • Stainless steel D shackles • Stainless steel wire grips • Reducers • Turnbuckles • Zinc plated nuts • Zinc plated washers • Threaded rod • Troffer support clips • Split bolt connectors • Intumescent firepads

WHY USE A TRANSNET MAINS ENTRY BOX?



MAINS ENTRY BOX

1, 2 & 3 PHASE

#TNMEB1PH

81.5mm W x 206.50 H x 77mm D

#TNMEB2PH

146.5mm W x 246.50 H x 87mm D

#TNMEB3PH

146.5mm W x 246.50 H x 87mm D



UV STABLE PLASTIC

Won't shatter



SHEAR BOLT CONNECTIONS

Perfect connection every time



SAFER

No bare parts



SECURE SCREW

Captive Stainless Steel cover screw



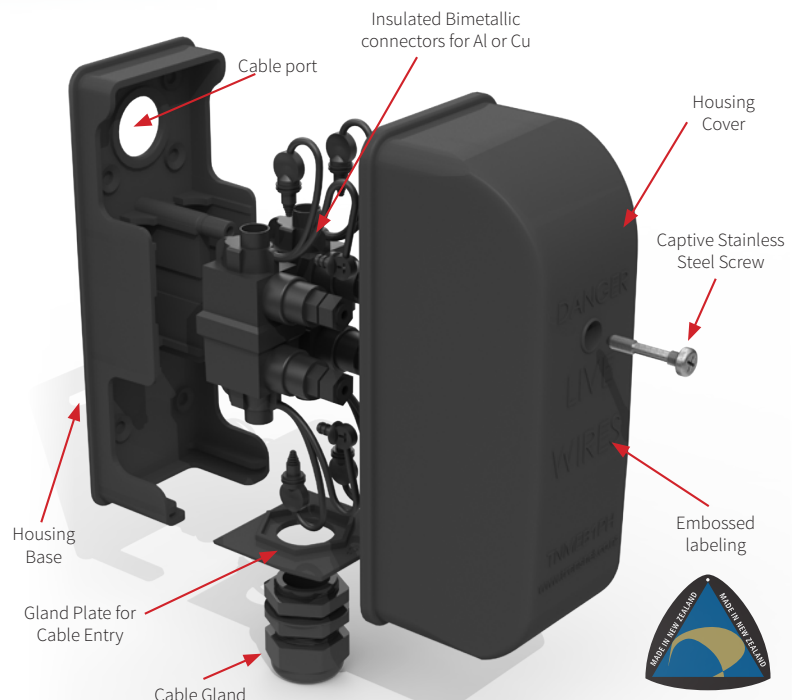
SAVE TIME

Make off connectors outside enclosure



FEATURES

- Made of UV stable plastic that won't shatter
- Shear bolt connectors for perfect connection every time
- Safer – No bare live parts
- Main cable supported by gland in gland plate
- Gland plate perfect fit for conduit gland too
- Strip length clearly outlined on connector body
- Make off connectors outside enclosure, saves time & effort
- Electrical test points and test point caps built into connector bolt for ease of testing
- Captive Stainless Steel cover screw
- Insulated bimetallic connectors will terminate AL/CU cables, 4mm²-35mm² range

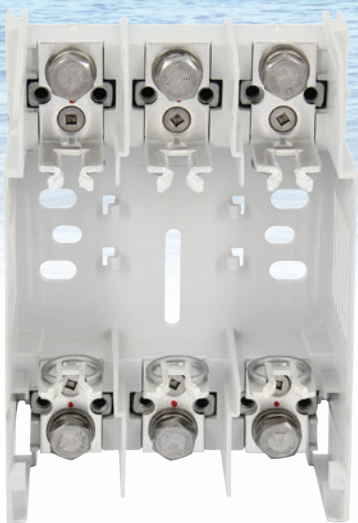




316 STAINLESS STEEL & GEOMET 321 COATED COMPONENTS FOR COASTAL APPLICATIONS.



**RBK
HORIZONTAL**



The Pro series of RBK & ARS switch disconnects is designed for the distribution of electricity and protection of electrical equipment against short-circuits and overloads with industrial fuse links, & is suitable for installation in low voltage distribution boards, cable and metering cabinets.

HIGH QUALITY MATERIALS

- Thermoplastic parts made of fibre glass strengthened polyamide with halogen-free flame retardant added and with the highest possible flammability class -V0
- Three pole main base with spring-loaded contacts designed for connection of circular or sector-shaped conductors
- Conductors with lug terminals or bars
- Removable cover with fuse links
- Arc chutes with steel deionization plates over top contacts
- Silver plated contacts provide low power loss

▶ RBK & ARS can come with 316 Stainless Steel & GEOMET® 321 coated components in place of the plated components, providing high corrosion resistance for coastal environments – ask us for more info.

MOUNTING

- On mounting plate
 - RBK 00 Pro
 - RBK 1 Pro
 - RBK 2 Pro
 - RBK 3
- On double DIN rail
 - RBK 00 Pro

This range conforms to EN 60947-1, EN 60947-3, IEC 60947-1 and IEC 60947-3 standards.



**ARS
VERTICAL**


APATOR

Vertical & Horizontal models for Din 00-3 sizes available.



ACOUSTIC FIRE PAD

Acoustic fire pads are non-setting intumescent putty sheets designed to be a cost-effective and efficient method of firestopping electrical sockets in dry wall fire-rated partitions.

FEATURES

- Up to 1 hour fire protection
- Choice of installation methods
- Simple to install
- Suitable for most drywall applications
- Acoustic rated with weighted sound reduction index of 65 in accordance with EN/ISO 7171-1

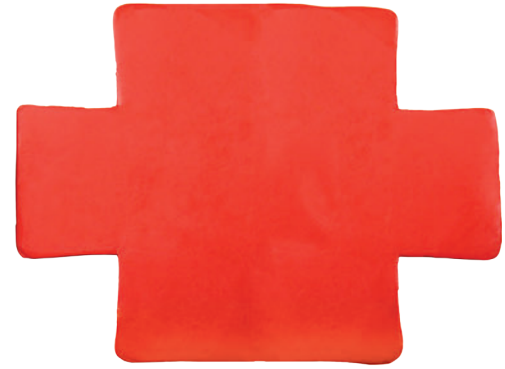
- Tested to AS1530.4-2005 & AS4072.1-2005

APPLICATIONS

Putty Pads can be fitted around the outside of a metal TransNet flush box to achieve both an Acoustic and Fire rating.

Intuputty Pads are not a health, spill or environmental hazard. They are rot proof, do not sustain vermin and will not encourage the growth of fungi, mould or bacteria.

CAT NO. FTPPADLGE



SLIMLINE FIRE COLLARS

Slimline fire collars consist of a Stainless Steel shell produced in two hinged halves, lined with intumescent material. They are designed to be placed around combustible pipes and fixed to compartment walls and floors with all steel anchors (supplied) in order to provide up to two hours of fire protection.

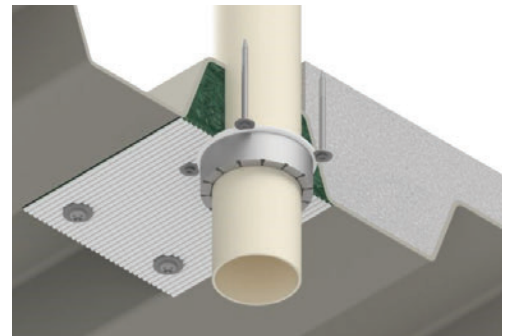
In a fire, the intumescent lining of the metal collar expands and crushes the heat softened plastic pipe leaving a potential path for fire completely sealed.

APPLICATIONS

Used to seal plastic (PVC-u, PVC, C-PVC, PP, PE, HDPE, PPR, Friatherm and ABS) pipes as they pass through fire compartment walls and floors.

FEATURES

- Ultra-slim flange and body design ensures easy installation in awkward situations
- Stainless Steel shell
- Simple single click clasp
- Water resistant
- Non-corrosive: inert product
- Range of sizes from 50mm Ø to 160mm Ø



Cat No.	Application Range Within Collar (mm)	Outside Diameter of Collar (mm)	Height (mm)	No. of Fixings
FTSLCOLLAR50	45-55	70	30	2
FTSLCOLLAR65	55-65	80	30	2
FTSLCOLLAR80	75-85	95	30	3
FTSLCOLLAR100	95-110	135	30	3
FTSLCOLLAR125	115-120	145	45	3
FTSLCOLLAR150	145-160	195	45	3

NOTE: This table is a guide only, minimum/maximum sizes may differ depending on the application - please refer to the system datasheet or contact Ryanfire technical for advice.



FBSS19R

·cable.
away

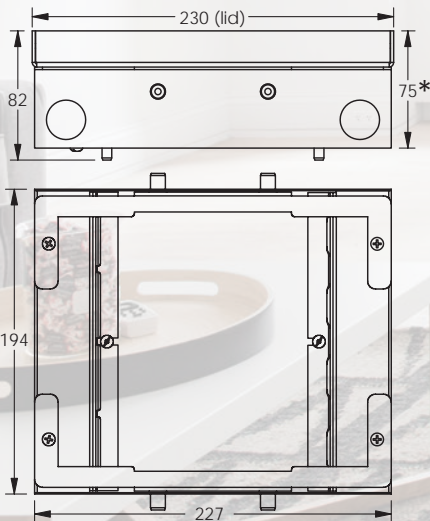


FBSS19R4P4D - FOUR POWER, FOUR DATA
STANDARD DEPTH

FB Series Shallow Floor Outlet Boxes

Our shallow floor outlet boxes are an ideal way to supply power, data and A/V to open floors of a commercial office building or residential home. With a range of size and finishing options there's a floor box to suit any situation.

FBSS19R4P4DS50 - Shallow Outlet Box with Recessed Lid



POWDER COATED ZINC ANNEALED
STEEL BODY

STAINLESS STEEL HEIGHT
ADJUSTABLE LID WITH 19MM
RECESS

SINGLE CABLE EXIT FLAP

20MM AND 25MM KNOCKOUTS
PROVIDED FOR EASY CONDUIT
ENTRY

FOUR AUTO SWITCHED POWER
OUTLETS SUPPLIED

PROVISION FOR FOUR CAT5 OR
CAT6 DATA PORTS

*50mm depth below poured concrete, total height adjustable from 75mm up to 100mm

ONLY
50MM
DEEP

Better Cable Management

GOT GAPS? PUMP THEM UP

Rayflute Duct Sealing System RDSS



TransNet New Zealand Ltd

Auckland

78 Cryers Road
East Tamaki
Auckland
NEW ZEALAND
Ph 0800 442 182
Fax 0800 442 183
PO Box 39 383
Howick, Auckland

Wellington

18 Sydney Street
Petone
Wellington
NEW ZEALAND
Ph 04 576 2530
Fax 04 576 0040
PO Box 39 383
Howick, Auckland

NEW ZEALAND

sales@transnet.co.nz

TransNet Tonga

Ma'ufanga

Small Industries
Ma'ufanga
TONGA
Ph +67 627 939
Fax +67 627 976
PO Box 2932
Nukualofa

TONGA

transnet@kalianet.to

Unsealed cable pipes and ducts need not to cause dampness and flooding in substation basements, cable vaults and access manholes.

In these environments rust, corrosion and a humid environment inevitably result in damage to support structures, metal work and electrical equipment. The most common route for water to enter into such installations can be blocked simply and effectively by a field proven technique developed by Raychem.

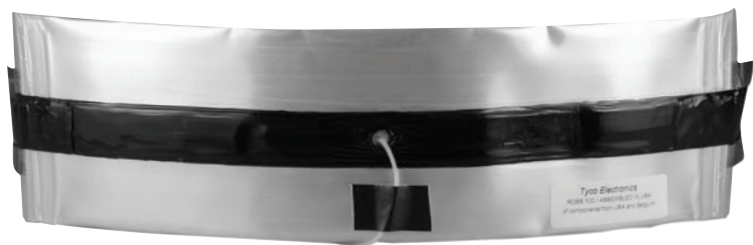
The Raychem Rayflute Duct Sealing System RDSS has been designed for use on power cables to provide a watertight seal when used with plastic, concrete or steel ducting systems. Once installed the Rayflute duct seals can provide operators with immediate access in clean and dry conditions, eliminating the routine of pumping manholes dry before work can begin.

Ideal for both new and existing cable installations

The versatility of the wraparound concept enables use not only for new cable installations, but also for existing applications. Unlike other methods that require dry ducts, the Rayflute seals can be installed when water is still flowing out of the duct – thus saving valuable installation time.

Removable

Rayflute seals are easier to be removed from a duct or a pipe than other systems. This allows cables to be replaced in an upgrade or repair. Since ducts are not damaged by the Rayflute system, they can easily be sealed again.



Eliminates the need to pump man holes dry, avoids ingress of mud into ducts, and withstands severely polluted environments



To find out more info go to www.transnet.co.nz or contact your local rep.

Raychem
from TE Connectivity



TransNet NZ Ltd has made every reasonable effort to ensure the accuracy of this information and it is to the best of our knowledge correct and reliable. Under no circumstances does this constitute an assurance of any particular quality or performance and users should independently evaluate the suitability of products for their desired application. All information in this publication including pricing, drawings, illustrations, images and graphic designs are reflections of our current understanding. TransNet NZ Ltd reserves the right to make any adjustment to this information at any time. Our liability for the products outlined in this publication is set forth in our standard terms and conditions of trade. In case of any potential ambiguities or questions, please contact us for clarification.



NEW ZEALAND OWNED