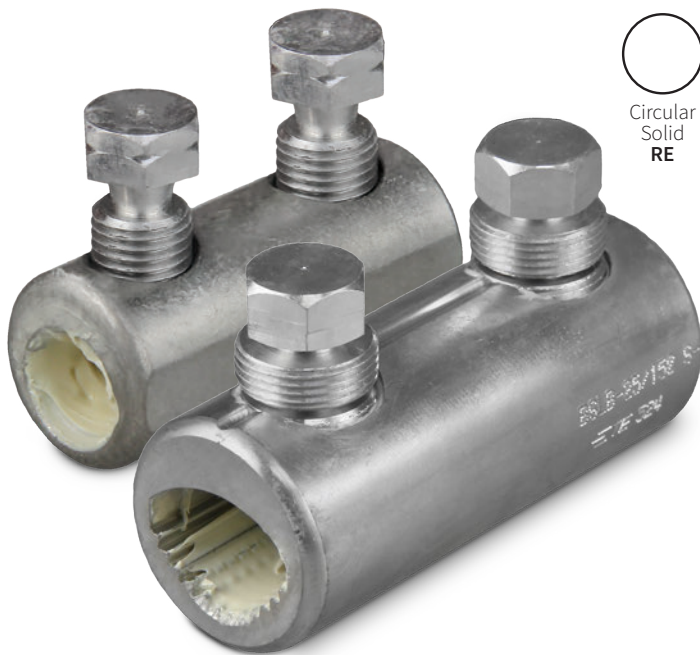




LV JUICE

LV MECHANICAL CONNECTORS FOR ROUND & SECTOR CABLE - **BLOCKED**

BSLB LV Mechanical Connectors are perfect for a range of conductors such as round and sector solid/stranded 3 core and 4 core. These connectors are also range taking, reducing the inventory list required to cover all possible sizes. Made from High Strength, Tin Plated Aluminium Alloy, these connectors are made to the highest international standards & offer excellent reliable connections for LV installations up to 1kV.



FEATURES & BENEFITS

- Fully compliant to the new specification DIN 47640
- Bodies and shear off bolts made of high strength Aluminium alloy
- Cross-grooved conductor channels for improved long term contact performance
- Bodies, with rounded edges, completely electro-tinned
- Bolts with outer hexagonal head, waxed for better installation
- Unique design with round bores & milled notches to allow installation of sector-shaped conductors without rounding
- Blocked for barrier against moisture transfer
- Successful qualification according to IEC-61238-1 Class A
- Bimetal, Al-Al, & Cu-Cu connections



This Month

RAYGEL PLUS JOINT KITS
PAGE 2

ECOLIGHT 160W
TROFFER HIGH BAY
PAGE 6

TRANSDelta4 PORTABLE
APPLIANCE TESTER KITS
PAGE 7

100% NEW ZEALAND

FREE PROTEIN BAR
WHILE STOCKS LAST



When you spend over \$300 (excl GST) on one invoice this month

www.transnet.co.nz

RAYGEL PLUS JOINT KITS



Raychem RayGel Plus Joint Kits offer quick, easy reliable sealed joints for low voltage applications. Enclosures offer a state-of-the-art sealed joint for underground, direct-buried and overhead applications.

WIDE APPLICATION AREA

- Street, garden and pool lighting
- Connection of outdoor equipment
- Frost protection systems
- Cable trays and cable ducts
- With Raychem GelBox 25 joints up to 5x25mm² or 4x35mm²
- For single-core cables from 10-50mm² & multi-core cables from 2x1.5 up to 5x16mm²

SOPHISTICATED ENCLOSURE DESIGN

- Optimised joint design with integrated strain relief and more space for the connection
- Flexible wave-like gel barriers (no tools required)

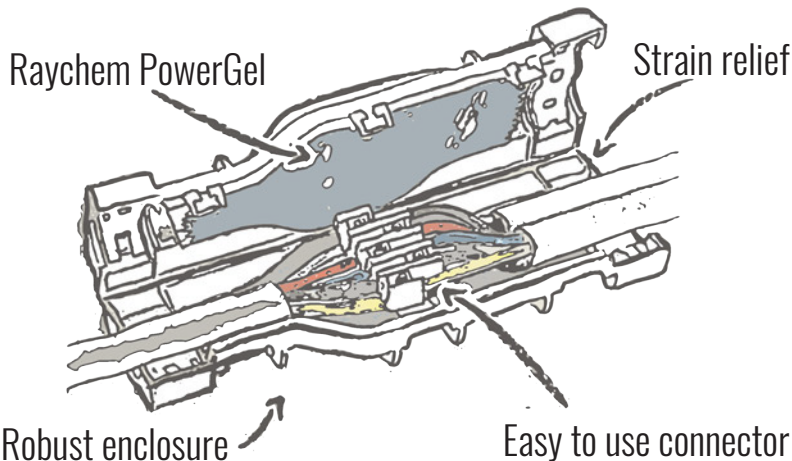
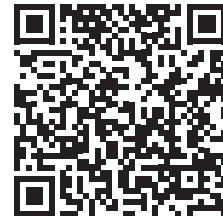
UNIVERSAL CONNECTOR BLOCK

- Full range of branching capabilities without cutting of main cables
- Supplementary tool for insertion of sliding nuts
- Unique latchable connector block for even more effective and easy installation

POWERGEL SEALANT FILLED

- Covers and seals every connection quickly and easily, saving time and effort
- Rated to 90°C continuous temperature
- Environmentally friendly

FIND OUT MORE



CAT NO.

#RAYGEL-PLUS-0
#RAYGEL-PLUS-1

#RAYGEL-PLUS-2
#RAYGEL-PLUS-3

Raychem
from TE Connectivity





CCG POSI FIT IP68 JUNCTION BOXES

TN-1003 | TN-1009

FEATURES

- High temperature resistance and anti-static properties
- DIN Rail mounting studs are provided for use with terminal blocks
- Raised domed lid facilitates connections to be made outside of the box
- Use with approved CCG cable glands & non-sparking terminals
- Dust and water tight to IP68 when fitted with CCG sealed cable glands
- Boxes can be buried for extended periods
- Made from impact, corrosion & UV resistant glass reinforced polyester compound
- Meets requirements of ANZEx 13.4127X
- Hazardous Area Classification ENEx: Zone 1, 2, 21 and 22 Ex e IIC DIP A21
- 4-blanking plugs included
- Boxes with see through polycarbonate "adapt-a-lids" available on request
- 4-way H-Boxes with parallel entries available on request
- Extensive range with multiple entry thread sizes



iTunes
CCG iPhone App
Download Now



TAPPAT - CABLE CLAMPS

WHAT MAKES RAYCHEM CABLE CLAMPS THE INDUSTRY LEADER?

- Elastomeric inserts can accommodate round, oval or "tri-round" cable profiles
- Bottom half of clamps can be mounted, prior to cable fitment
- Available in slider plate and strut nut configurations - patented slider plate design maximises clamp performance when under shock load
- Smooth aesthetics which improve overall strength while in operation. Easy product identification
- Optimised for harsh environments with stainless steel hardware
- Self-extinguishing, UV stabilised, impact resistant polymer materials
- Can be used as a dual cable clamp or stacked
- Can be mounted using centre bolt or 2 bolts at extremities
- Range accepts cable diameters from 26-106mm (more coming soon)

Tappat cable clamps have a patented design which optimises clamping force at both the attachment point, and the cable by securing each clamp half separately. Cables can be aligned and located in the bottom half of the clamp prior to the final tightening.

Clamps come complete with all fasteners, no chance of coming up short on the job.

Available in single, double & trefoil configurations.

STACKING OPTIONS

- Stacked dual application
- Dual cable application
- 3 x 3 configuration
- Pyramid Installation
- 3 phase pad mount kit TAP10910 - 26-38mm Ø
- Double stacked trefoil application





TRANSNET MAINS ENTRY BOXES: NOW AVAILABLE IN 1, 2 & 3 PHASE

TRANSNET MAINS ENTRY BOX 1, 2 & 3 PHASE



#TNMEB1PH

81.5mm W x 206.50 H x 77mm D

#TNMEB2PH

146.5mm W x 246.50 H x 87mm D

#TNMEB3PH

146.5mm W x 246.50 H x 87mm D

FEATURES

- Made of UV stable plastic that won't shatter
- Shear bolt connectors for perfect connection every time
- Safer – No bare live parts
- Main cable supported by gland in gland plate
- Gland plate perfect fit for conduit gland too
- Strip length clearly outlined on connector body
- Make off connectors outside enclosure, saves

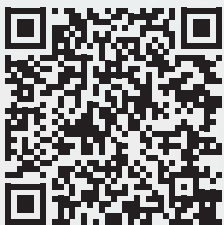
time & effort

- Electrical test points and test point caps built into connector bolt for ease of testing
- Captive Stainless Steel cover screw
- Insulated bimetallic connectors will terminate AL/CU cables, 4mm²-35mm² range



GUROSIL-GEL

Test & repair electrical connections quickly where required, even after installation! Designed to protect electrical connections from the ingress of water from high humidity areas as well as outdoor applications, GUROSIL-Gel is a soft-elastic hardening, amber cold casting compound based on hydrocarbon resins.



**CHECK OUT OUR
INSTALLATION
VIDEO ON
← YOUTUBE**



FEATURES AND BENEFITS

- IP68 proven casting system
- Provides reliable protection against humidity, mechanical shock and vibration
- Quick, easy and clean to install using customary

caulking guns

- Soft-elastic, transparent, self-repairing and self-resealing
- Easy to remove, repairable & self-sealing
- Halogen, Silicon and Isocyanate free
- Environmentally friendly

TECHNICAL DATA

Nominal Voltage: 400V
Dielectric Strength: >20kV/mm
Operating Temperature: -40°C to +90°C
Cable Diameter: 6 x 1mm², 5 x 1.5mm² or 4 x 2.5mm² per connection
Cable Entry: 7 x M25 including plug-in seals for

cable diameter 4-20mm
Terminal System: Terminal block 4mm², 5-poles, pluggable
Gel Volume: 250ml

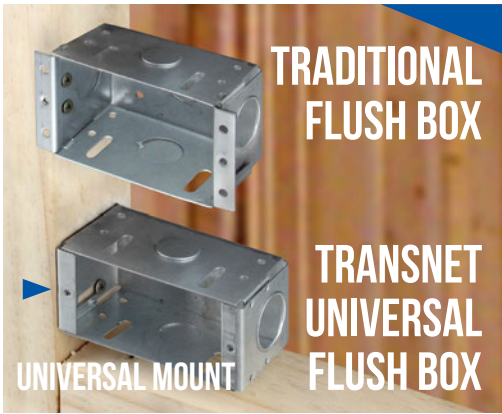
Raychem
from TE Connectivity

CAT NO. #JDR-5830I

Full kit with enclosure also available



TRANSNET UNIVERSAL FLUSH BOX & INTUMESCENT FIREPAD



TRADITIONAL FLUSH BOX

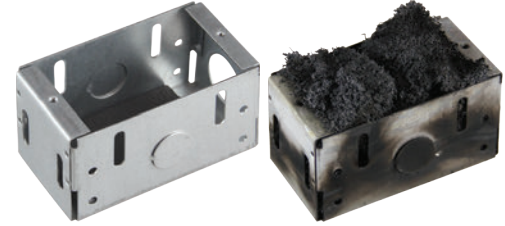
TRANSNET UNIVERSAL FLUSH BOX



INSTALL HORIZONTALLY OR VERTICALLY

UNIVERSAL MOUNT

- Completely redesigned to make it truly "universal" in its mounting options
- Speed up fitout time as switchplate screws won't bind into the timber behind it
- Can be mounted **vertically** or **horizontally** anywhere on the framework of a wall



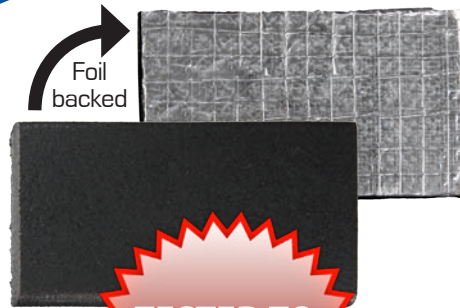
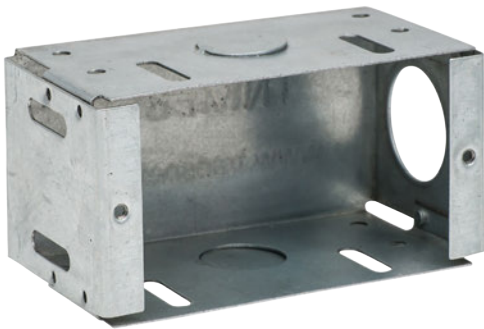
BEFORE

AFTER

In the case of heat or fire, the TNFIREPAD develops a high volume expansion (20.1) and a high expansion pressure which causes the complete closure of an opening within a short time in order to prevent the transition of smoke and fire.

Fire resistance class EL-90 according to EN 1366/3.

#TNMFBSH USE WITH #TNFIREPAD



TESTED TO
AS1530.4-2005
AS4072.1-2005



Product #TNMFBSH
\$3.03
+ GST

Product #TNFIREPAD
\$7.20
+ GST

TRANSNET STAINLESS STEEL TURNBUCKLES

STAINLESS STEEL TURNBUCKLES

These stainless steel turnbuckles are made from 304 Stainless Steel and sold in packs of 10.

Cat No.	Thread Ø	EYE I/D A (mm)	Buckle Length B (mm)	Buckle Width C (mm)
TNTB5	M5	9	71	15
TNTB6	M6	11	92	18
TNTB8	M8	15	121	21
TNTB10	M10	16	150	23



TEST REPORTS



PRICED FROM
\$6.30
+ GST



All Specials and Products featured in TRANSNET JUICE are available from all good electrical wholesalers.





LEDIL20-160CW



GLASS FREE



ONBOARD MICROWAVE SENSOR



COST EFFECTIVE OPERATION

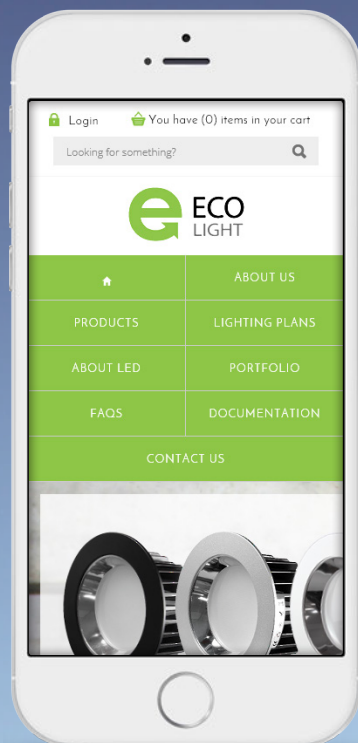


HIGH PERFORMANCE

This LED troffer light is the perfect alternative to old T5 technology in terms of longevity, performance, reliability and functionality. The standard model has an onboard microwave motion sensor capable of turning on/off individual rows of LEDs depending on what best suits your

operations. Sensor adjustment is extremely easy and does away with a centralised control unit, meaning cost effective installation. The troffer is glass free and designed to be suspended from four chains (supplied with each unit).

VIEW THE NEW TROFFER HIGH BAY IN ACTION ON OUR WEBSITE



APPLICATIONS

- Warehouses
- Production areas
- Big box retail
- Transport depots
- High ceiling showrooms



WWW.ECOLIGHT.CO.NZ

Model No.	Power (W)	Lumens (lm)	Colour Temperature	Input Voltage	Sensor	IP Rating	Dimensions (mm)
LEDIL20-160CW	160	13,600	6000K*	220-240V AC	MICROWAVE MOTION	IP20	1220 X 288 X 100

SUITABLE FOR: Warehouses, production areas, big box retail, transport depots, high ceiling showrooms

*Other colour temperatures available on special request



TRANSDELTA4

PORTABLE APPLIANCE TESTER KITS

TRANSDELTA4-ZBATT

Everything you need to high volume professional safety testing of portable appliance, all in the one handy kit. This kit pairs the MI3309BT appliance tester with a printer, software, tablet, hard case, & battery pack.

MI3309BT Features

- 128 x 64 dot LCD with backlight
- Easy reading of results
- Large data flash memory
- USB & RS232C comm ports
- Built-in real time clock
- Barcode system for quick test code selection & device identification
- Programmable limits for PASS/ FAIL evaluation
- Fully compatible with Metrel PATLink PRO software
- Portable & lightweight design
- Rechargeable with built-in charging circuit
- Runs on mains power or batteries

COMPLETE KIT CONTENTS

MI3309BT DeltaPAT

- Soft Carrying Bag
- IEC Cable, 2m, 2pcs
- Tests Lead, Black/Green/Brown
- Crocodile Clips, Black/Green/Brown
- Test Probes, Black/Green/Brown
- PC Software PATLink PRO
- RS232 Cable
- USB Cable
- Instruction Manual (CD)
- Short Instruction Manual
- Calibration Certificate

- NiMH Rechargeable Batteries, 6 x size AA

ZEBRA 2824+ Printer

- Power Supply
- Battery Pack with Charger
- Black Ribbon
- 250 Roll Labels
- FREE LOGO UPLOAD
- S2063 Bluetooth ZEBRA Dongle

Android PATLink Application Key

- Samsung 8" Tablet
- Hard Case with Custom Foam Insert



ALSO AVAILABLE AS

#TRANSDELTA4-Z

MI3309BT with printer only

#TRANSDELTA4-ZTAB

MI3309BT, printer, Bluetooth, PATLink & tablet



#TRANSDELTA4-Z

#TRANSDELTA4-ZTAB

Please contact customer services for kit pricing and additional information.



GOOD NEWS TRAVELS FAST

Current Events From The Team



TransNet New Zealand Ltd

Auckland

20 Neilpark Drive
East Tamaki
Auckland
NEW ZEALAND
Ph 0800 442 182
Fax 0800 442 183
PO Box 39 383
Howick, Auckland

Wellington

18 Sydney Street
Petone
Wellington
NEW ZEALAND
Ph 04 576 2530
Fax 04 576 0040
PO Box 39 383
Howick, Auckland

NEW ZEALAND

sales@transnet.co.nz

TransNet Tonga

Ma'ufanga

Small Industries
Ma'ufanga
TONGA
Ph +67 627 939
Fax +67 627 976
PO Box 2932
Nukualofa

TONGA

transnet@kalianet.to

ECOLIGHT MOTORSPORT - COROMANDEL RALLY

SATURDAY 20TH AUGUST

The ECOLight motorsport team competed in the last round of this years National Rally Championship, Rally Coromandel, based in the seaside town of Whitianga. With fine weather during the lead-up leaving the the iconic 309 and Tapu-Coroglen Roads in fantastic condition, the rally was one of the best of the year, and a nice event to finish off the championship. After a year of developing a new car, The ECOLight Motorsport

team was looking for a strong result on this event. After a small engine misfire slowed up the pace in the first three stages - leaving the team in 8th overall - a string of fast stage times in the remaining seven stages resulted in a season best 4th overall. In what is proving to be a very competitive championship, only 10 seconds separated 2nd, 3rd & 4th places after 120km of special stages. Focus for the team now

switches to the Tarmac rally roads of Targa New Zealand, where they will be aiming to win the event for the third time in a row.



TEST & MEASUREMENT PRODUCT DEMOS

FROM THURSDAY 25TH AUGUST

TransNet's comprehensive range of Test & Measurement products is hitting the road and will be in your local store this month. Get first-hand experience with the latest test & measurement equipment at our Show & Tell product demos. Our

technical experts will be demonstrating some of our most well-known brands, such as Metrel, Martindale & Gossen Metrawatt. Contact your local sales rep for information on the Show & Tell closest to you.



COUNTIES SEASON KICKING OFF

FROM SUNDAY 28TH AUGUST

The Counties Manukau Steelers start their 2016 Mitre 10 Cup home campaign on Sunday with a match against the Bay of Plenty Steamers, and we will be keeping a keen eye on their progress as the year continues. Get

out and show your support at the ECOLight Stadium in Pukekohe for one of their home games, or for the Counties Manukau Heat, who are playing on the 9th of September for the Farah Palmer Cup.



TransNet NZ Ltd has made every reasonable effort to ensure the accuracy of this information and it is to the best of our knowledge correct and reliable. Under no circumstances does this constitute an assurance of any particular quality or performance and users should independently evaluate the suitability of products for their desired application. All information in this publication including pricing, drawings, illustrations, images and graphic designs are reflections of our current understanding. TransNet NZ Ltd reserves the right to make any adjustment to this information at any time. Our liability for the products outlined in this publication is set forth in our standard terms and conditions of trade. In case of any potential ambiguities or questions, please contact us for clarification.

